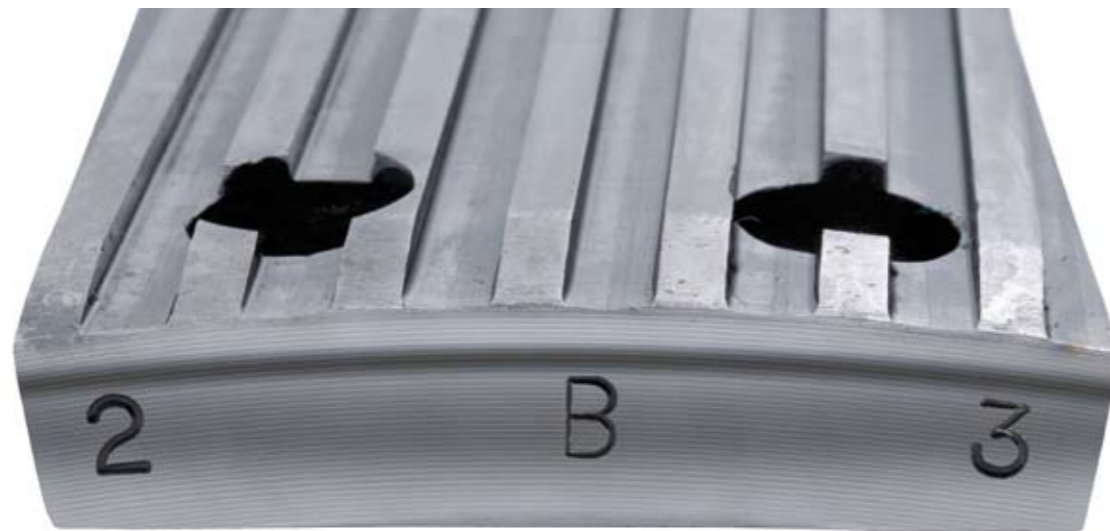


LINTER + HULLER



WEAR PARTS FOR COTTON SEED AND OTHER OIL MILLS



Extreme wear resistant spare parts for cottonseed delinting and dehulling and other dehulling oil mills.

Top quality in the manufacturing process, first class steel qualities, guaranteed parallelism of each part as well as perfect hardening identifies each single KEK-product. A 100% fit-in-guarantee of the parts is achieved by exact dimensions with only small tolerances allowed. Beside this unique quality of KEK

products you can also rely on our service: Huge capital investment are made in large stocks to ensure a local on-time delivery and to optimize costs. These saved costs are forwarded to you, our customer. On special request all products can be designed especially for your needs!



KEK LINTER BLANKS + GUMMER FILES

The cottonseed from the cotton gins is delinted in the cottonseed oil mills by means of linter blanks. For a continuous production the perfect fitting and perfect quality of the linter blanks as well as the gummer files is crucial. We achieve this by using the best steel available worldwide: German Steel, which guarantees us a constant high quality, parallelism and perfect thickness of the linter blanks. The precisely and extreme wear resistant made gummer file ensures a top quality recutted linter blank!



LINTER BLANKS + GUMMER FILES

available in 12.5/8" and 18" with thickness .035" or .045". Bore sizes are available in 2.15/16", 6" and 7.15/16". Special dimensions are also available on customers request.



LINTER RIBS

Single Unit Linter Ribs, available for all dimensions, intermediates, left hand and right hand execution. Unbreakable but still wear resistant!



GUMMER FILES

Also available: Fixing screws and file spindles as well as all other required spare parts for gummer machines.

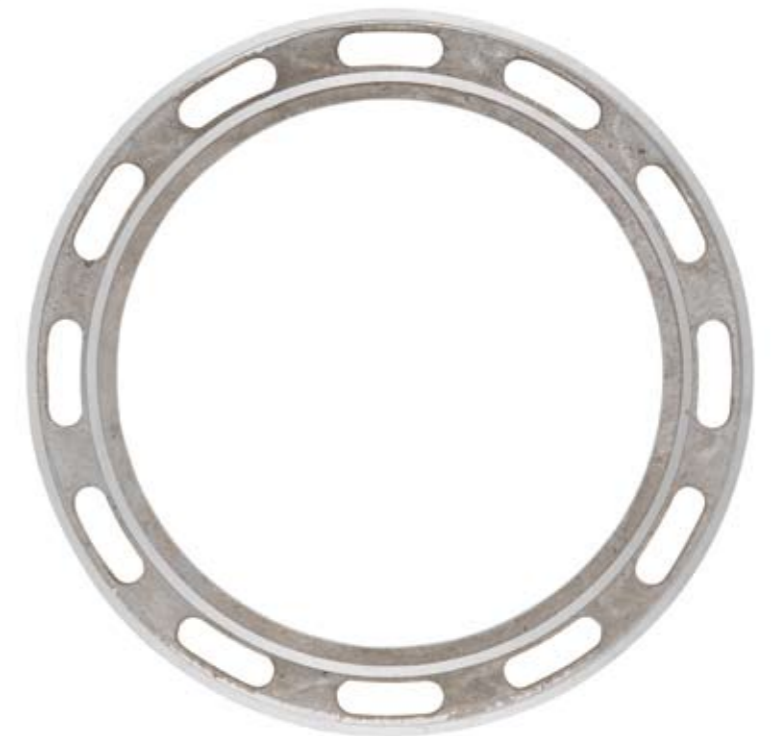
GRATE FALL UNITS

Linter Rib Sets, available for all dimensions, intermediates, left hand and right hand execution. With KEK fit-in guarantee!



ALUMINIUM SPACE RINGS

For all machines, exact width for a guaranteed perfect fitting in the machine.



	Pieces	total pieces	Description
FOR SYSTEM CARVER			
1 SET OF HULLER BARS			
	2 x 24	48	AVAILABLE WITH 6 GROOVES (KEK-217), 9 GROOVES (KEK-219) OR 10 GROOVES (KEK-218) OR ON SPECIAL REQUEST
FOR SYSTEM IMPCO			
1 SET OF HULLER BARS			
	2 X 19	38	AVAILABLE WITH 7 GROOVES (KEK-8600) OR 9 GROOVES (KEK-8600-A) OR ON SPECIAL REQUEST

Maximum wear resistance through perfect hardness and quality of steel used. We can additionally offer the required screws to fit the parts.



KEK SYSTEM CHANDLER

High grade steel parts, easy to fit, durable and wear resistant are hallmarks of our huller parts. The exquisite material quality and perfect hardness as well as our large stocks guarantees you the worldwide known KEK-QUALITY and KEK-FLEXIBILITY.





EGON KELLER GMBH & CO. KG

Anton-Küppers-Weg 17
P.O. Box: 140350
D-42824 Remscheid
Germany
Phone +49-2191-84100
Fax +49-2191-8628
Fax +49-2191-8629
E-Mail info@keller-kek.de
www.keller-kek.de